



PHARMAC
TE PĀTAKA WHAIORANGA

A leai se aganu'u, ona pō lea le nu'u - When there is no longer a living culture, darkness descends on the village.

Te Pātaka Whaioranga Pharmac
A learning journey with Pacific Data Sovereignty.

**Research: Pacific peoples health - Gout data insights
Te Pātaka Whaioranga Pharmac. 2022.**

November 2022: Lemalu Alexa Masina

Invite you to turn your phones **ON**

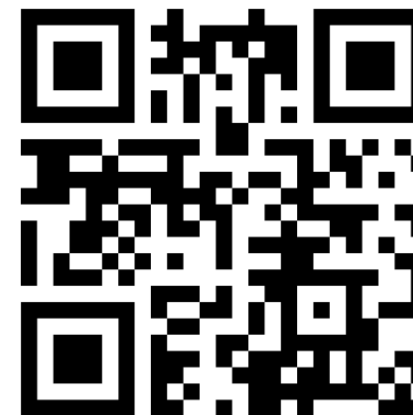


Pacific peoples health - Gout data insights report.

Te Pātaka Whaioranga Pharmac. 2022.

Medicine access equity monitoring and outcomes framework 2021 – Methodology document

Te Pātaka Whaioranga Pharmac. 2022.



A lens to explore our Pacific Data Sovereignty Journey:

Late Aiono Dr Fanaafi Tagaloa

" E taua tele fesootaiga manino i le lauga Samoa e faigofie ai ona malamalama tagata i manaoga o le lauga'.

- Need for clarity in Samoan oratory, which brings understanding and enlightenment

“A leai se aganu’u, ona pō lea le nu’u”

- When there is no longer a living culture, darkness descends on the village

- focus: delivery, clarity, intent, purpose, outcome, communication, audience, stewardship, and leadership

Pō (darkness) to Malamalama (enlightenment) Pacific Data Sovereignty Journey...

- A shared commitment to drive the principalities to the best of our ability
- Build a shared culture and understanding of Pacific Data Sovereignty: Pacific peoples and as stewards and allies
- Regular upskilling meetings, information, and talanoa
- Talanoa and workshops with experts about what Pacific Data Sovereignty is and the whakapapa of Pacific data in Aotearoa (Moana Connect)
- Pacific voices, aspirations, and values are supported and valued

Pō (darkness) to Malamalama (enlightenment) Pacific Data Sovereignty Journey.....

- Assess and evaluate where we were honestly - including bias and racism
- What were our strengths and limitations?
- What does good look like? What tools and support is available and what opportunities for Pacific voices to be included meaningfully across the work
- Opportunities for Pacific peoples to derive benefits or equitable outcomes from the data
- What can be strengthened and built on, what did we need to stop doing?
- Assess against the draft Pacific Data Sovereignty Principles

Pō (darkness) to Malamalama (enlightenment) Pacific Data Sovereignty journey.....

- Opportunities to drive the spirit and principles of Pacific Data Sovereignty across all work including communications, media, and engagement
 - Talanoa & talatalanoa
 - Review and revisit what good and not-so-good looks like
- Project management, governance, and regular talanoa to ensure people involved with work current and new at different phases of the work understand the Pacific Data Sovereignty aspirations and goals



Pō (darkness) to Malamalama (enlightenment)
Pacific Data Sovereignty journey.....

- What next?



Questions?

Fa'afetai tele lava/Acknowledgements.....

Moana Connect

- Jacinta Fa'alili-Fidow
- Nalei Taufua
- Samuela 'Ofanoa
- Dr Malakai Mahunui 'Ofanoa
- Dr Susan Reader
- Dr Seini Taufua

Pasifika GP Network & Pacific chapter of the Royal New Zealand College of General Practitioners

- Dr Apisalome Talemaitoga

Auckland University

- Professor Nicola Dalbeth

University of Otago

- Associate Professor Lianne Parkin
- Dr Simon Horsburgh

Pharmac

- Aasha Parle
- Alex Maplesden
- Alexa Masina
- Bridget Armour
- David Hughes
- Jane Wright
- Jason Arnold
- Katherine Graham

- Liz Barlow
- Louis Pang
- Pamela Chipana
- Patsy Kainuku
- Peter Alsop
- Rongo Toelupe
- Sarah Fitt
- Sarah Beri
- Sandy Bhawan
- Dr Scott Metcalfe's



Additional slides.....

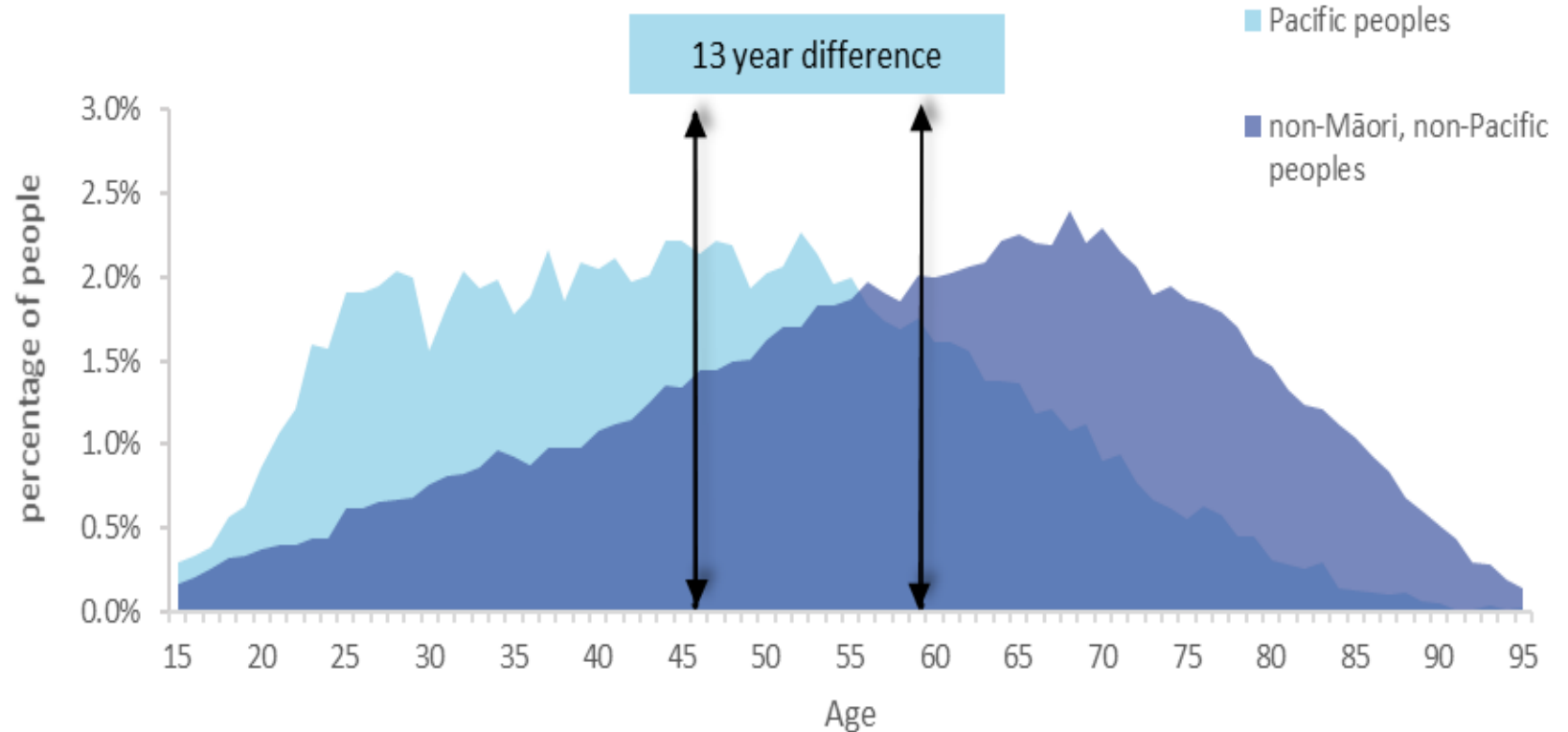
Improving Pacific peoples health

- The Pacific Peoples Health – Gout Data Insights Project is aligned to
 - Pharmac’s Strategic Priority of: Equitable Access and use of Medicines
 - The Pacific Responsiveness Strategy:
- Pharmac has developed a medicines access equity monitoring and outcomes framework to track progress and identify trends and patterns in medicine access to funded medicines
- Information about this work and the methodology used for the Pacific Peoples Health – Gout Data Insight can be found on our website

What did the Data show?

Pacific Peoples Health – Gout Insights

Percentage of people first dispensed gout specific medicine
2014/15-2018/19 by age and ethnicity



Pacific peoples start preventive gout treatment earlier than non-Māori, non-Pacific peoples

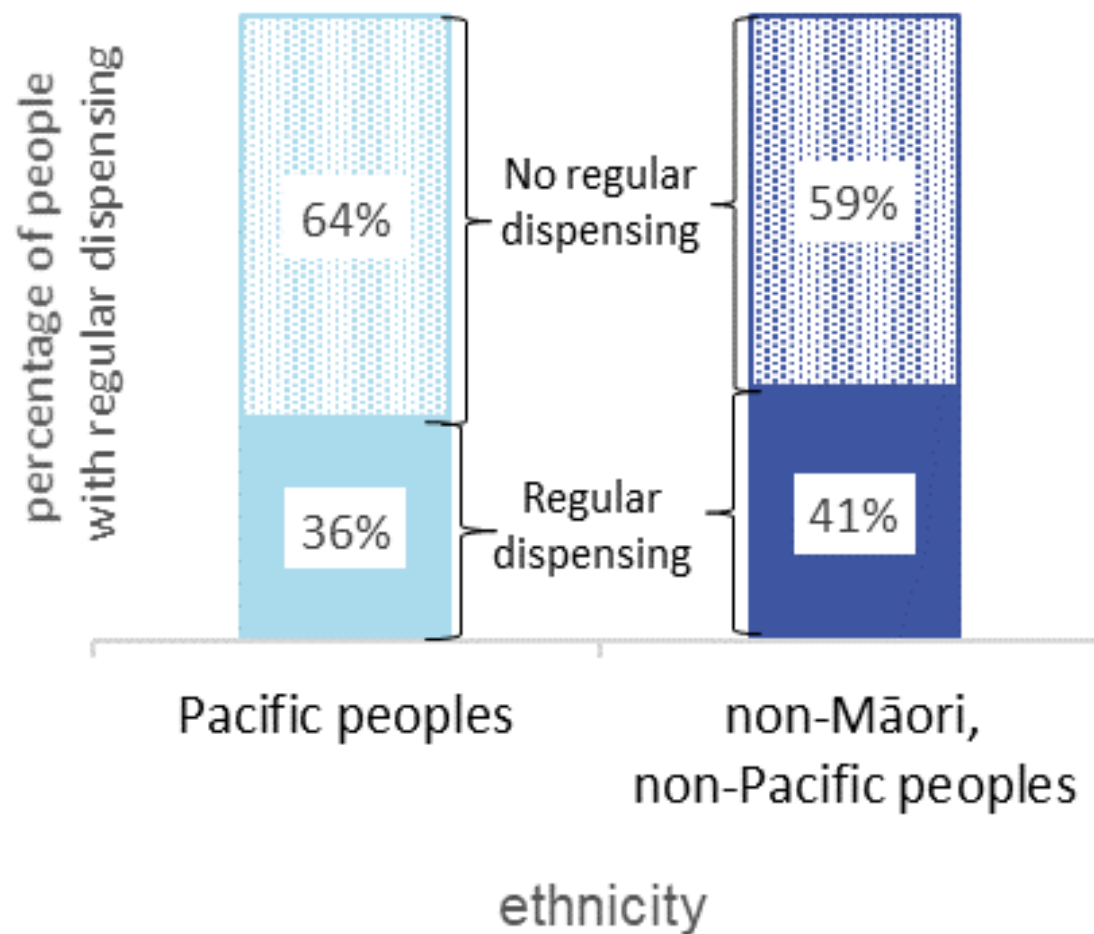
[Pacific peoples health – Gout data insights](#)

Pacific peoples receive less regular dispensing of preventive gout medicine compared to non-Māori, non-Pacific peoples

Pacific peoples have lower rates of possession

Across all ethnicities access to regular dispensing is low

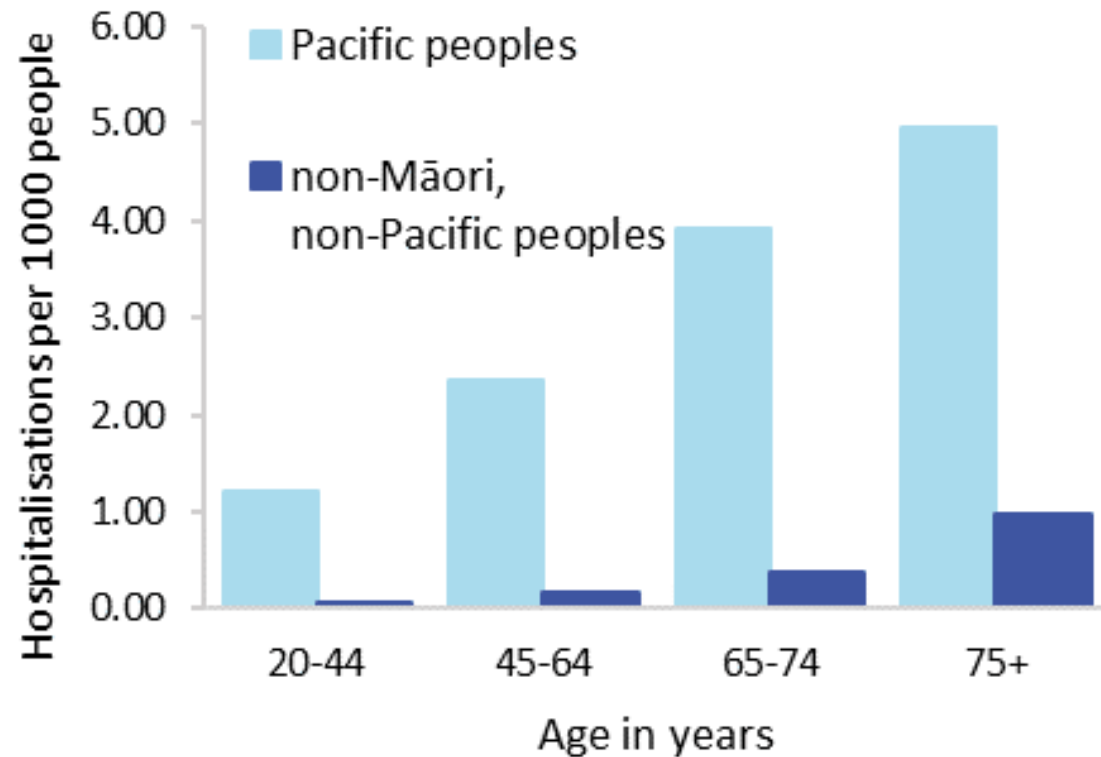
Regular dispensing of preventive gout medicine in 2018/19 by ethnicity



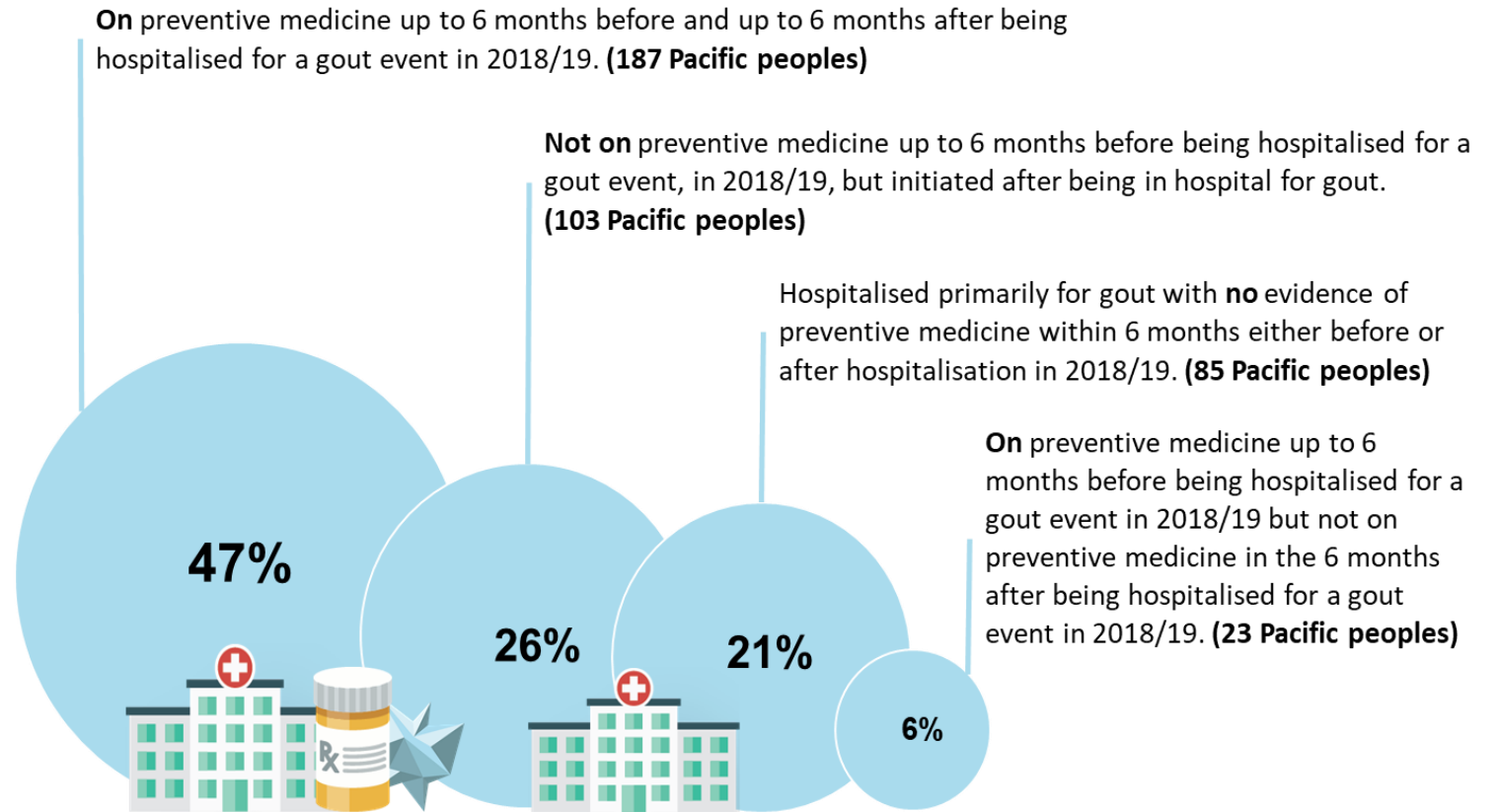
Pacific peoples are 13.8 times more likely to be hospitalised with a primary diagnosis of gout than non-Māori, non-Pacific peoples

In the 20-44 year old age group it is 22.7 times.

Rate of hospitalisations with a primary diagnosis of gout 2014/15-2018/19 by age and ethnicity



In 2018/19, 47% of Pacific peoples hospitalized for gout were not receiving preventive gout medicine in the six months prior to hospitalisation



What did we learn?

- Our intention was for data and insights to empower positive action towards equitable access to medicines for Pacific peoples
- Informs positive action and change for Te Pātaka Whaioranga Pharmac
- Inform prescribing, planning, decision making and solutions to improve Pacific health and reduce inequities in medicine access
- We needed to learn and apply the principles of Pacific data sovereignty in this work
 - Protect, promote and honour the interests and aspirations of Pacific peoples
 - Pacific peoples to derive benefit or equitable outcome from the data
 - Key decision makers with the authority and autonomy to decide how indicators described
 - Minimise harm and ensure that data generates collective gains
 - Maintain the quality and integrity of Pacific peoples data
 - Use to influence and inform policy and practice to assert Pacific peoples rights and interests