

# The Tāngata Whenua, Tāngata Moana Paradigm applied to the Future State Integrated Data System

Pacific Data Sovereignty Conference 2022

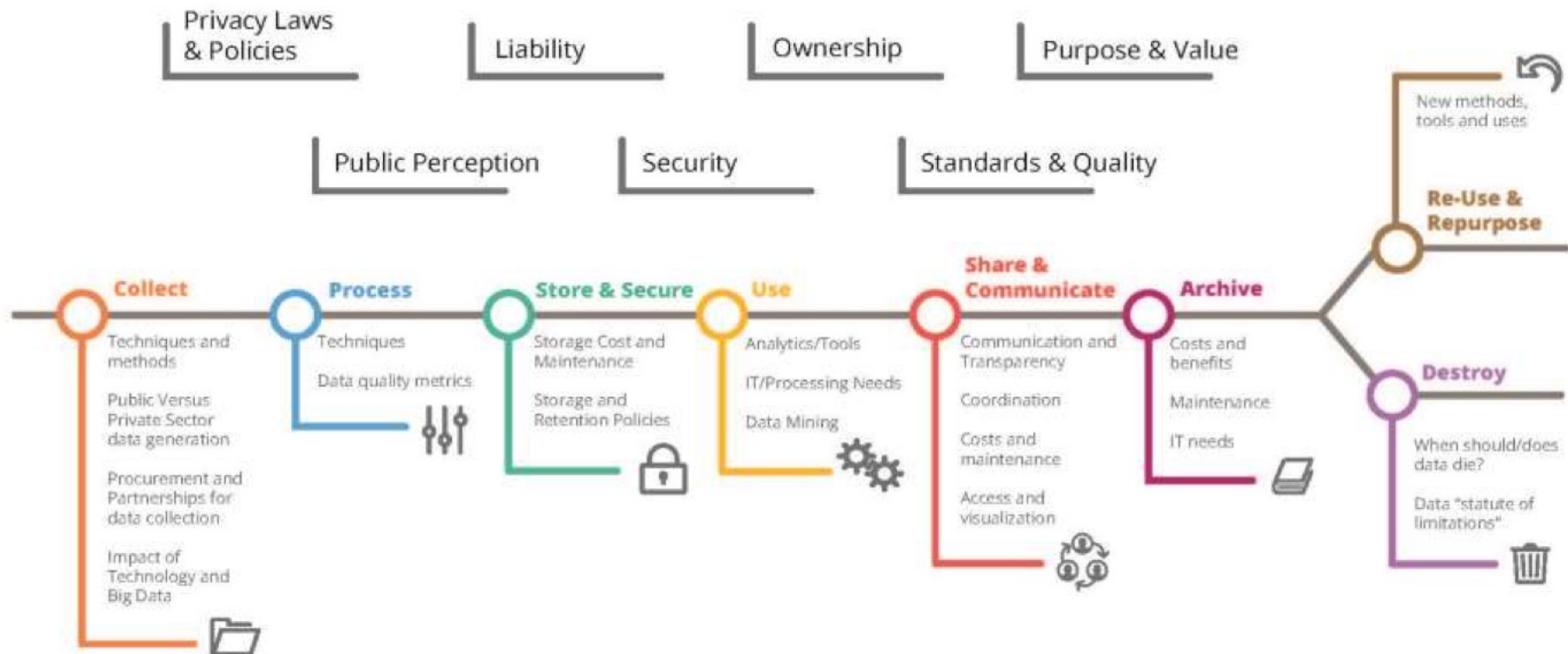
Shane Ta'ala - Principal Advisor-Design  
Te Tohu Rautaki Angitū Māori



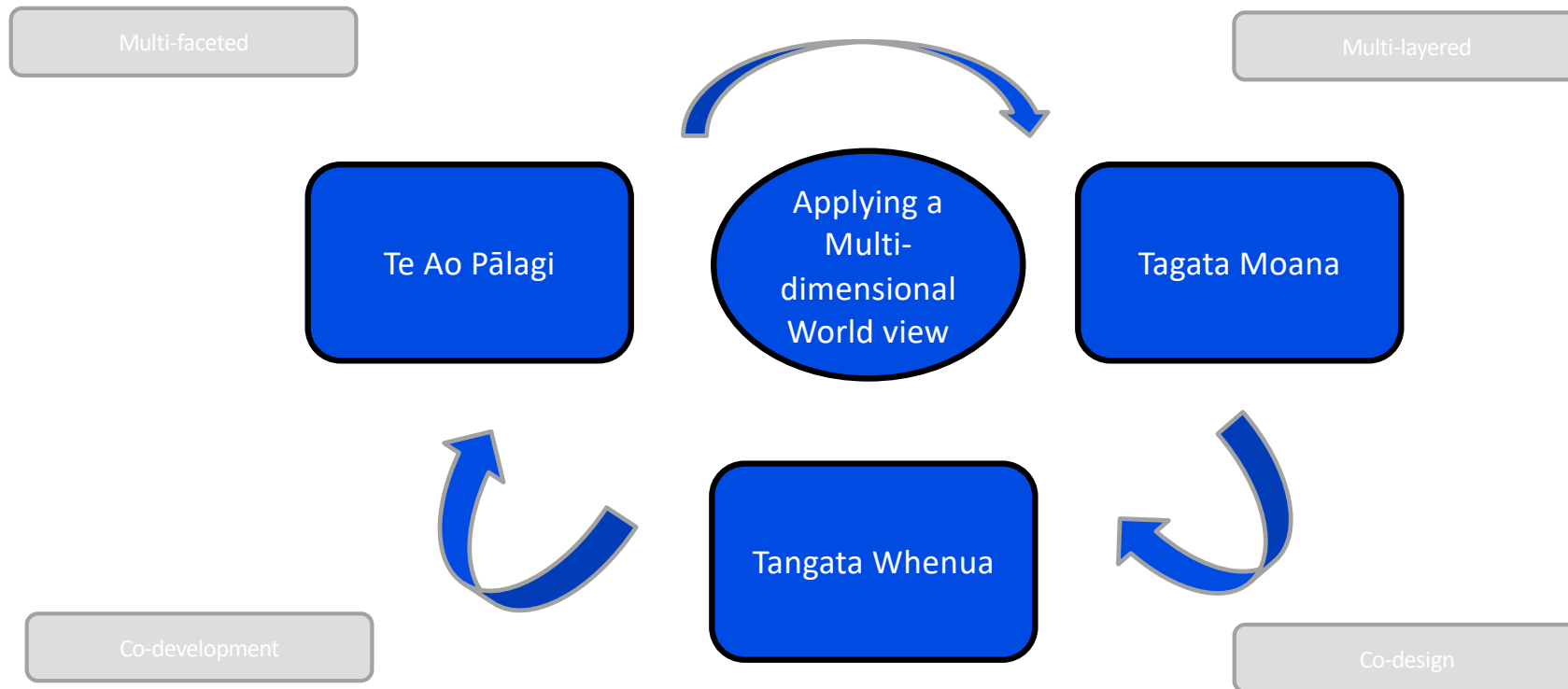


# Data Management Life Cycle

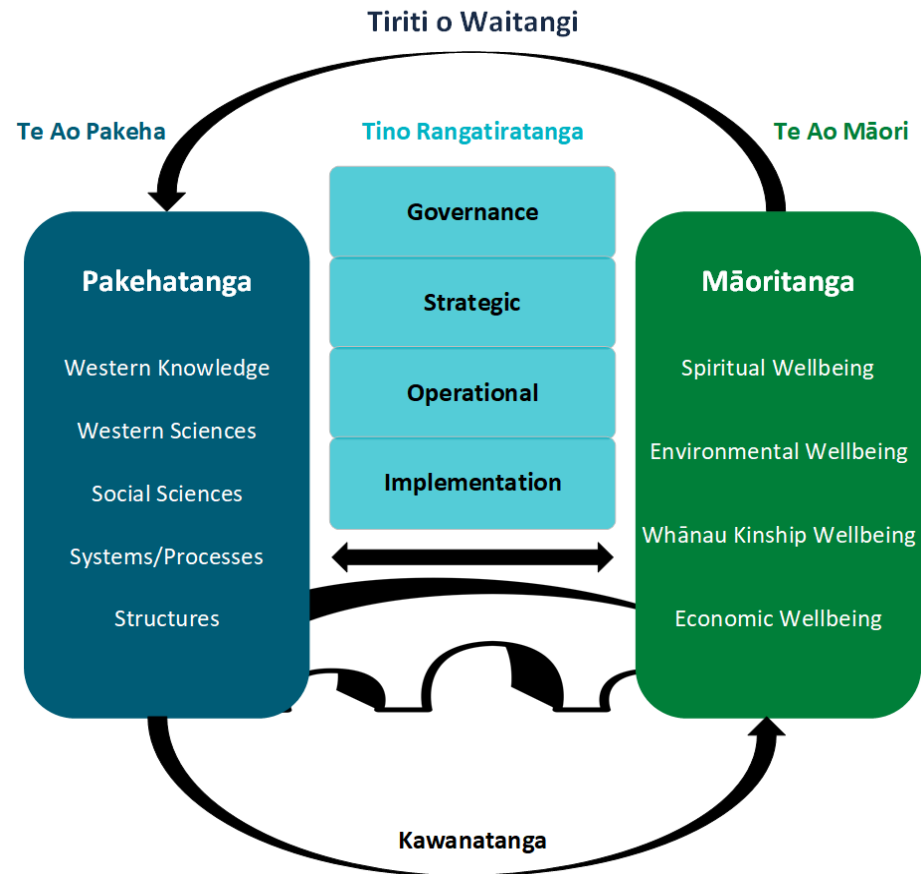
## Cross-cutting Issues



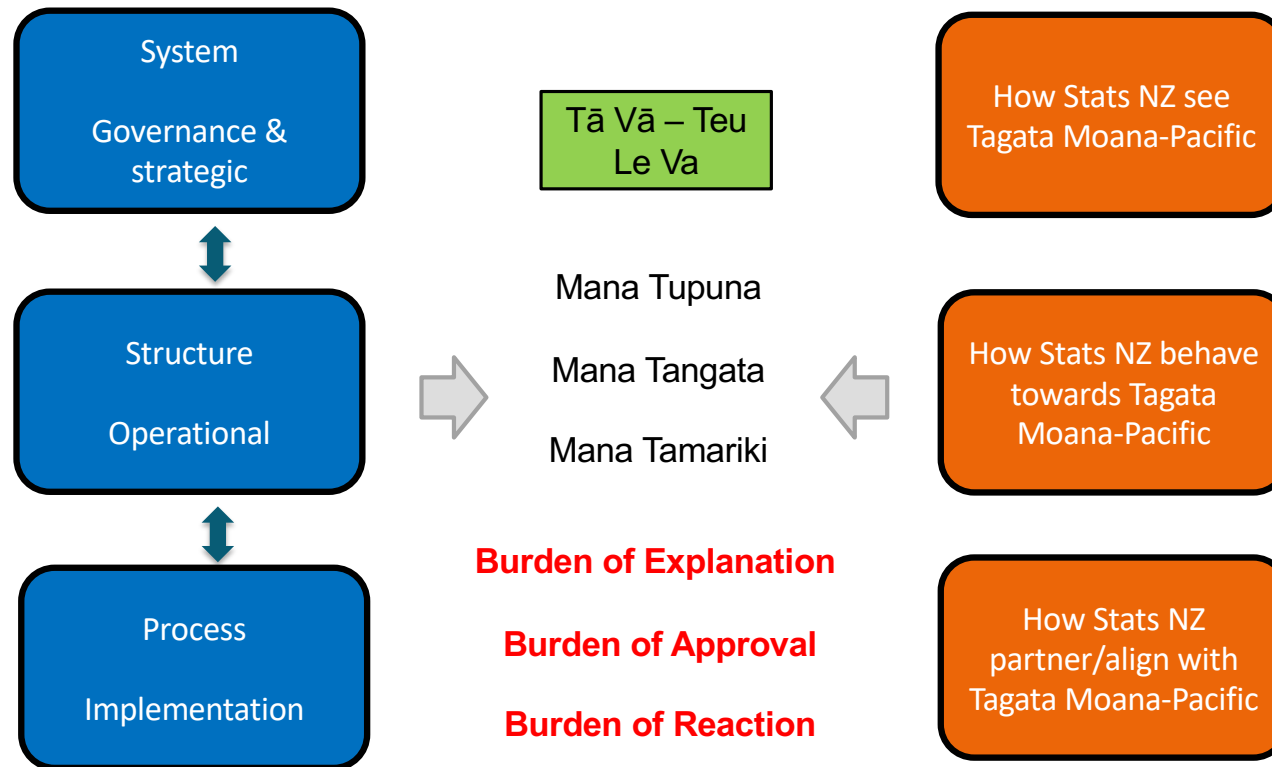
# Multi-Dimensional Approach - Layers



# Replacing the one size fits all approach



# Multi-Dimensional Approach - Layers



# The Data and Statistics Act 2022

## Duties of Statistician relating to Tiriti o Waitangi/Treaty of Waitangi

The Statistician must,-

Section 14 (a) in performing the Statisticians functions under this Act, recognise and respect the Crown's responsibility to give effect to te Tiriti o Waitangi/the Treaty of Waitangi by recognizing the interests of Māori in -

- (i) the collection of data, the production of statistics, and access to, and use of, data for research as tools for furthering the economic, social, cultural, and environmental well-being of Māori (including iwi and hapū); and
- (ii) the way in which data is collected, managed, and used for the production of official statistics and for research:



## The Data and Statistics Act 2022

Section 14 (b) states - build and maintain the capability and capacity of Stats NZ to -

- (i) understand te Tiriti o Waitangi/the Treaty of Waitangi and the perspectives of Māori (including iwi and hapū) in relation to the collection and use of data for the production of official statistics and for research; and
- (ii) engage with Māori about the collection of data, the production of official statistics, and the use of data for research under this Act to provide useful insights about the economic, social, cultural, and environmental well-being of Māori (including iwi and hapū):





# The Data and Statistics Act 2022

Section 14 (c) states – foster the capability and capacity of Māori to -

- (i) collect and use data for the production of statistics; and
- (ii) access and use data under this Act for research; and
- (iii) Engage with the Statistician under this Act.



**Stats** NZ  
Tatauranga Aotearoa



# Strategic Implications of the Data and Statistics Act 2022



## ← **SPI Future State Plan 2022** →

using our mātāpono (principles), and doing things with āta (intention), ākina (commitment)  
angitū (excellence)

**Think  
conceptually**

**Plan  
in detail**

**Execute with  
flexibility**

**A plan without contingencies is not a plan**



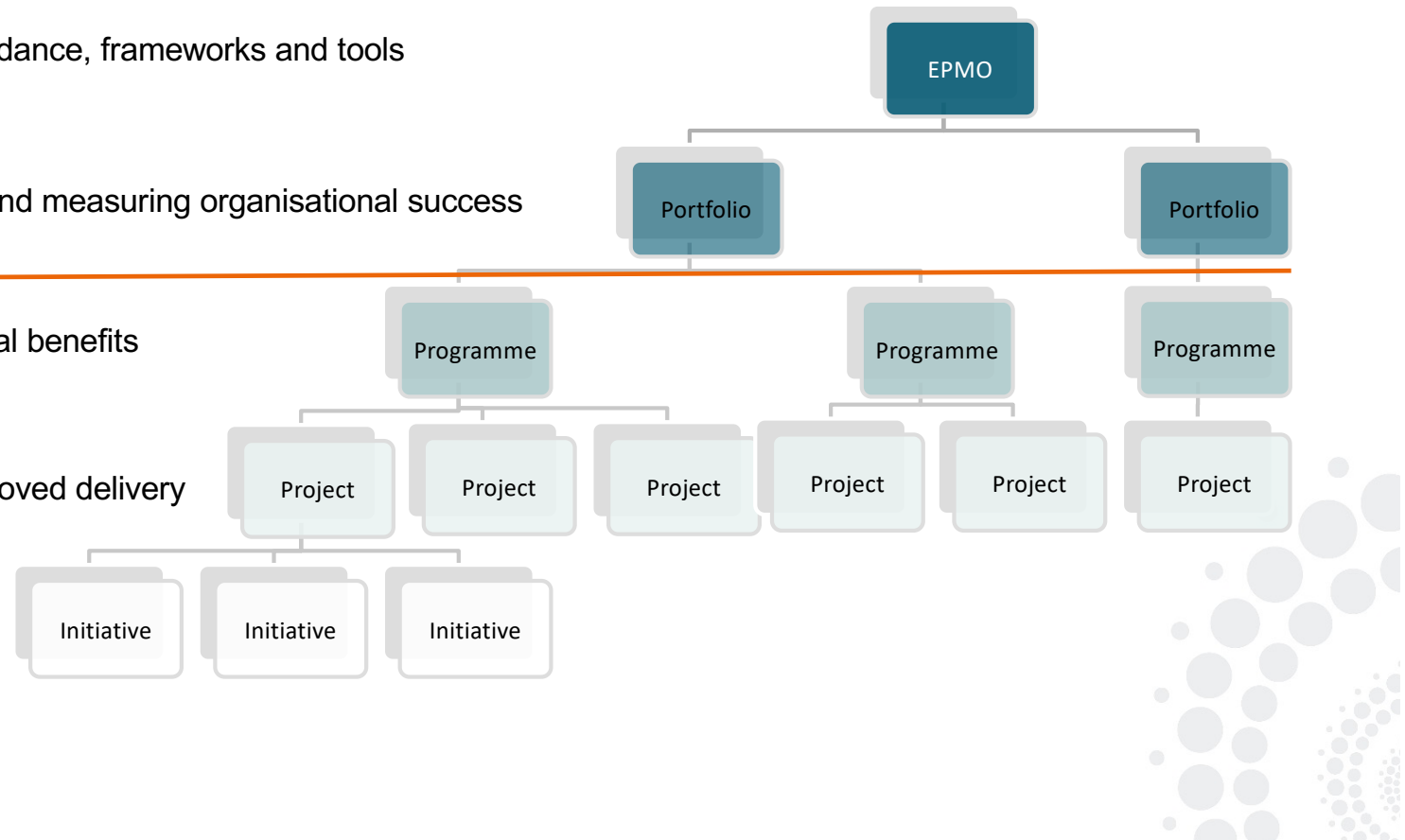
# Programme Management

Enterprise strategic guidance, frameworks and tools  
Management

Doing the right things and measuring organisational success

Delivering organisational benefits

Doing things right, improved delivery



*Systems don't change just because we identify them;  
they change because we disrupt them.*

Cornelius Minor



# The System – Future Takers and Future Makers

**Accepting** the future versus **shaping** the future:

- What is possible?
- What is probable?
- What is desirable?



## Moving into the Future

### **Future takers:**

- Accept the future for what it brings
- 'Powerless to change what will be'
- Ready to respond to change

Professor Mason Durie



## Moving into the Future – Future Takers and Future Makers

### **Future makers:**

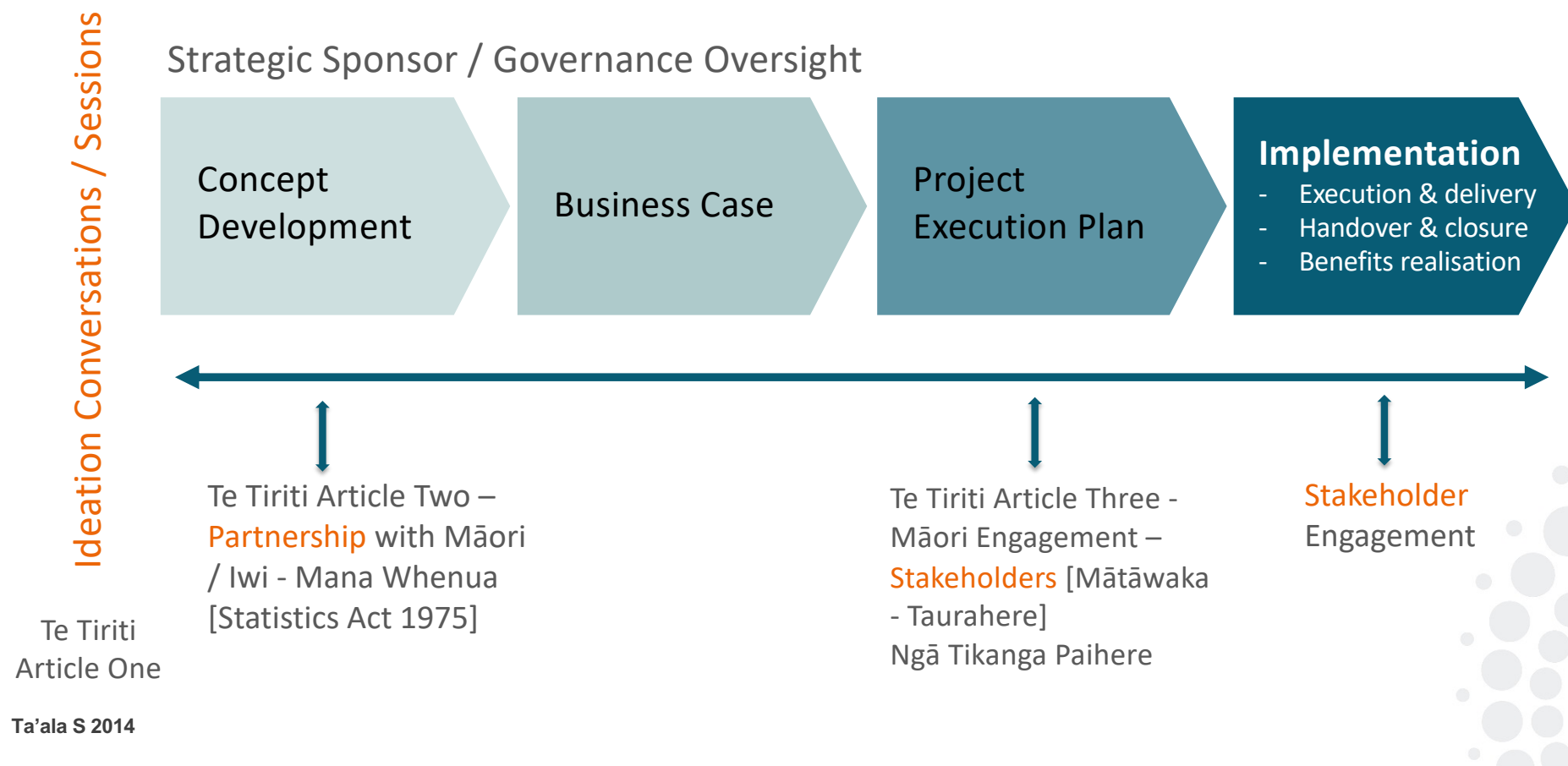
- Shape the future by reading the signs
- Determined to create future spaces
- Ready to lead change

Professor Mason Durie

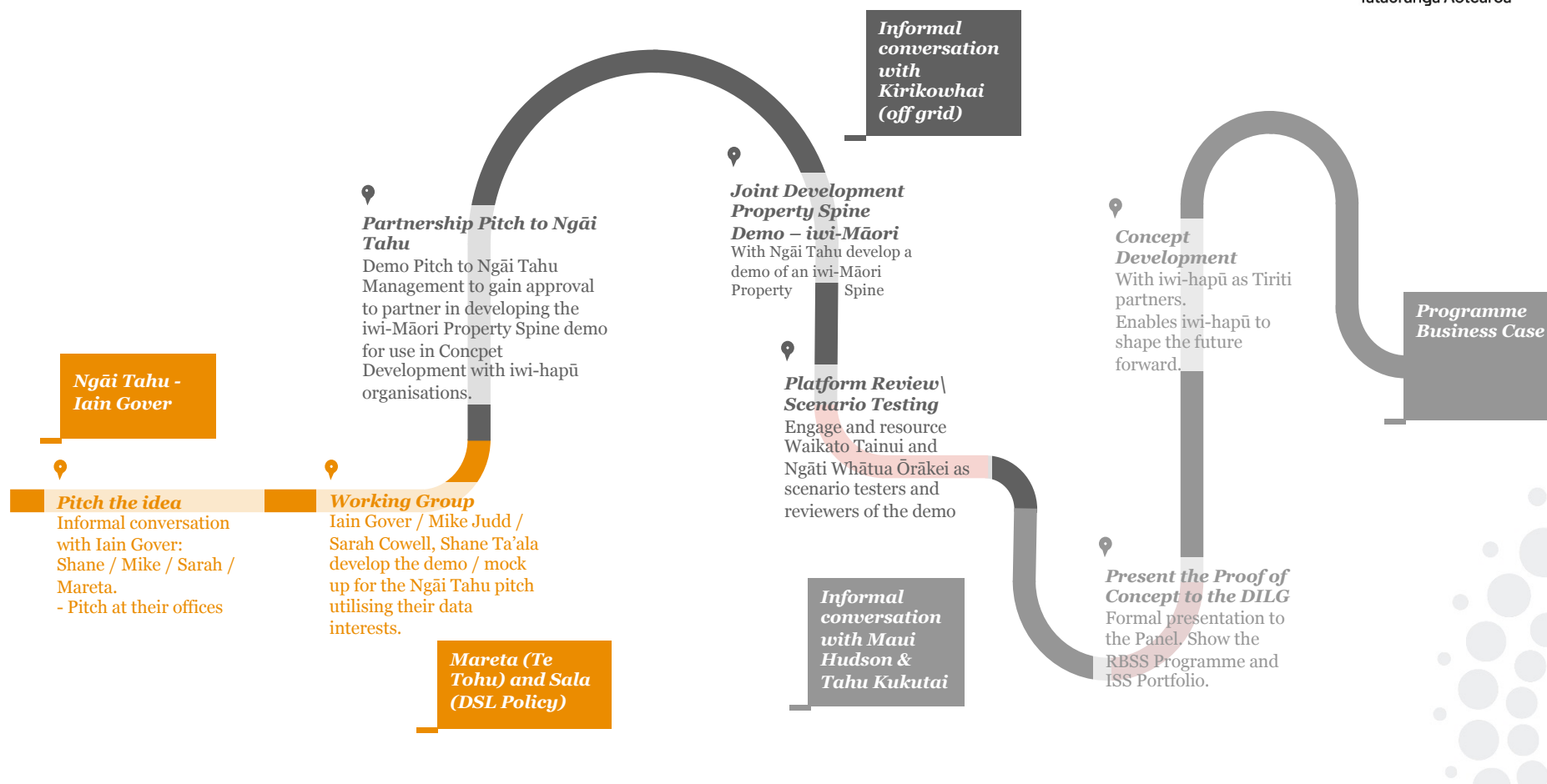




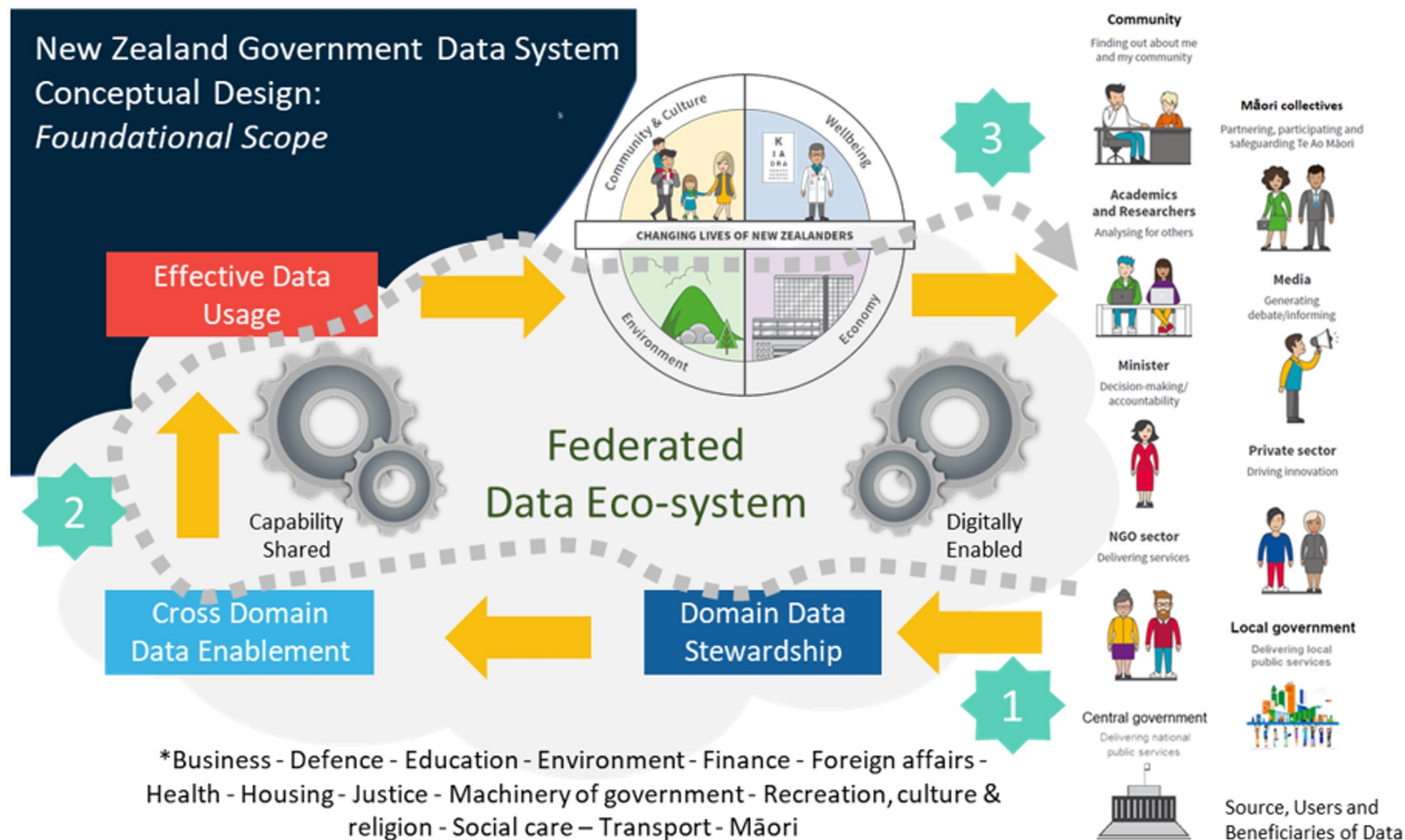
# Applying Kaupapa Maori to decision making



# Iwi-Māori Property Spine 'Proof of Concept' Pathway



# Breadth of the Government data system

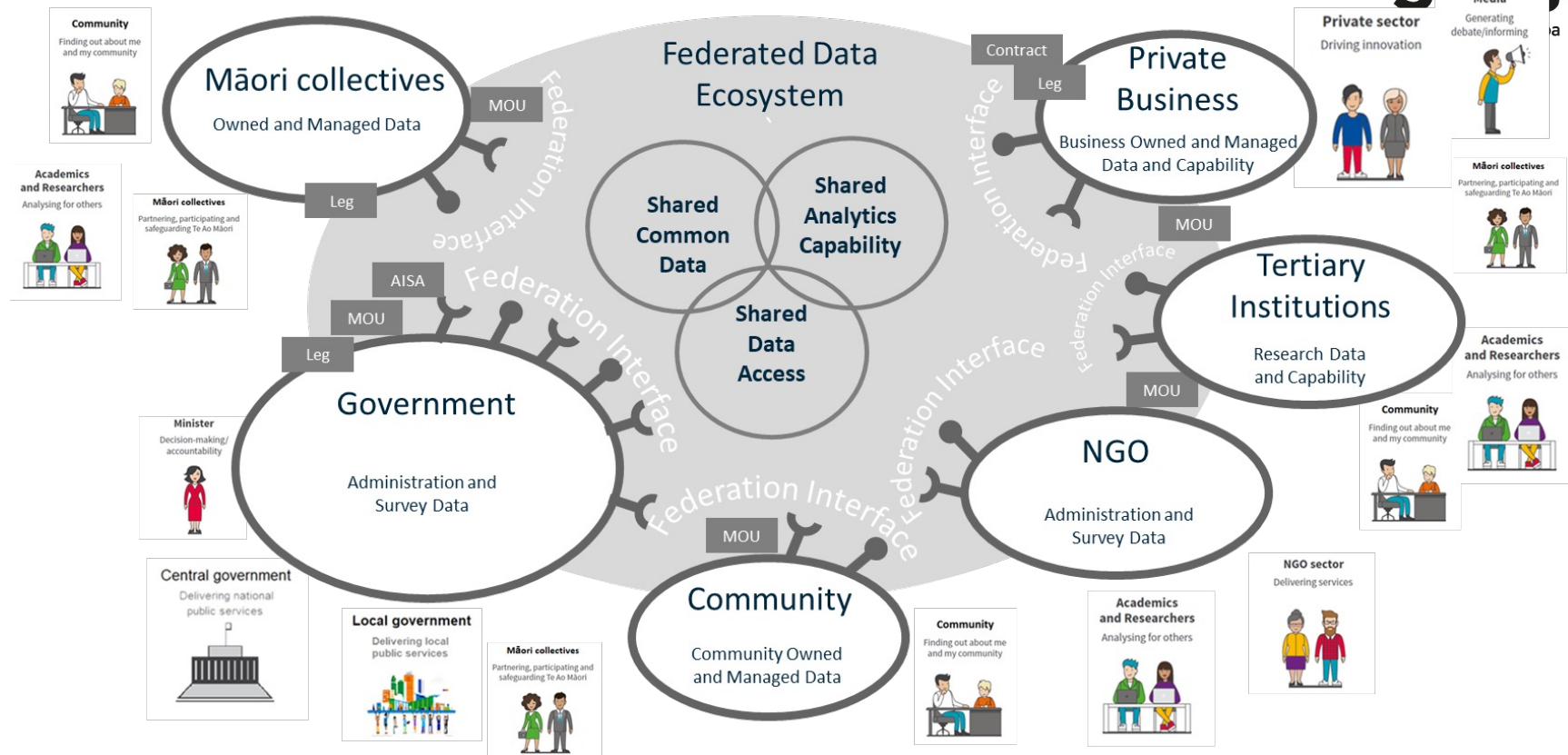


Represents the reality and broad nature of the current government data system domains and form the basis for data federations

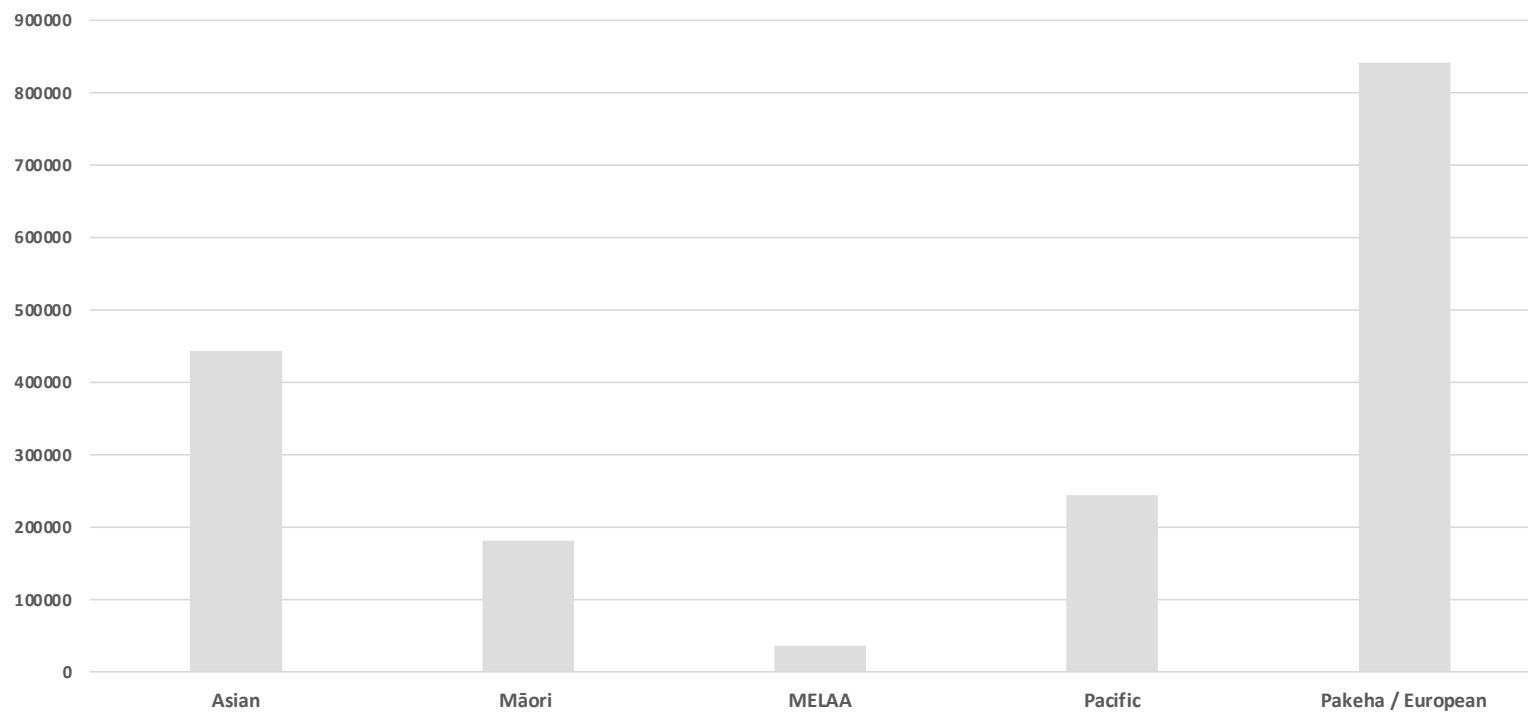
Focuses on data value chains and data reuse across domains and sectors to provide tangible benefit to people

Supports reciprocity between beneficiaries of the operational and analytical outcomes and those that are also essential to the data supply (many of whom are the same government data system participants)

# The Conceptual model of the Government data system



# Population ethnic groups Tāmaki Makaurau 2018



Source: RIMU Census 2018 Breakdowns - Stats NZ.



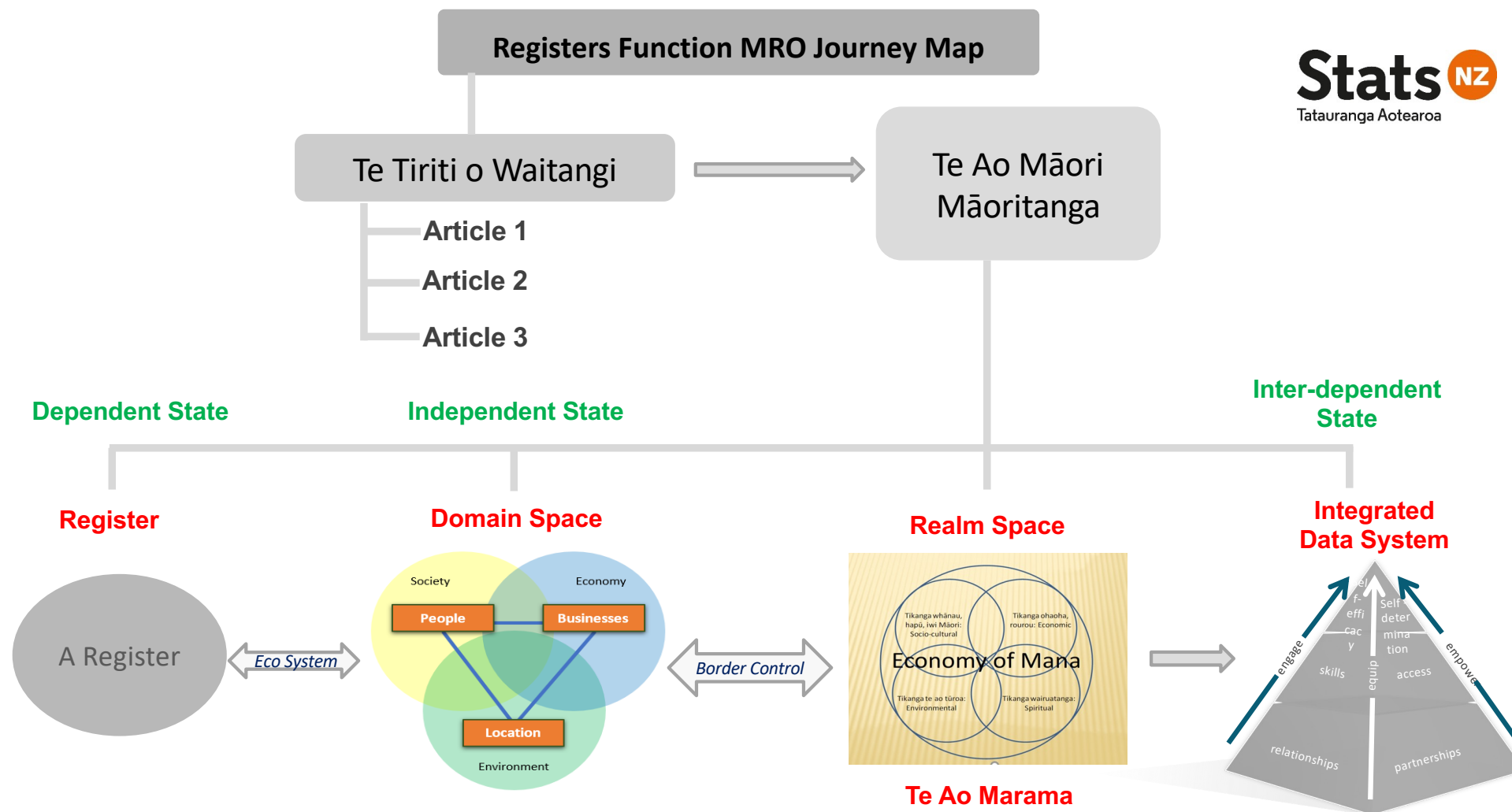
# Psychographics versus Demographics

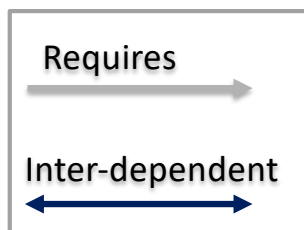
Psychographic Research	Demographic Research
<p>A quantitative tactic used to measure subjective information, for example:</p> <ul style="list-style-type: none"><li>• Opinions</li><li>• Religious beliefs</li><li>• Cultural values and world views</li><li>• Personality traits</li><li>• Lifestyle choices</li></ul>	<p>A quantitative tactic used to measure factual information, for example:</p> <ul style="list-style-type: none"><li>• Age</li><li>• Gender</li><li>• Sexual orientation</li><li>• Household size</li><li>• Income</li></ul>

Demography conveys, but does not contextualise. Policy and planning is often based purely on demography (in practice).

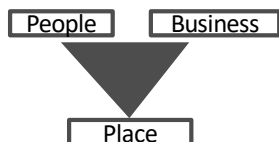
Is demography a strengths based approach for Tāngata Moana Pasifika people?



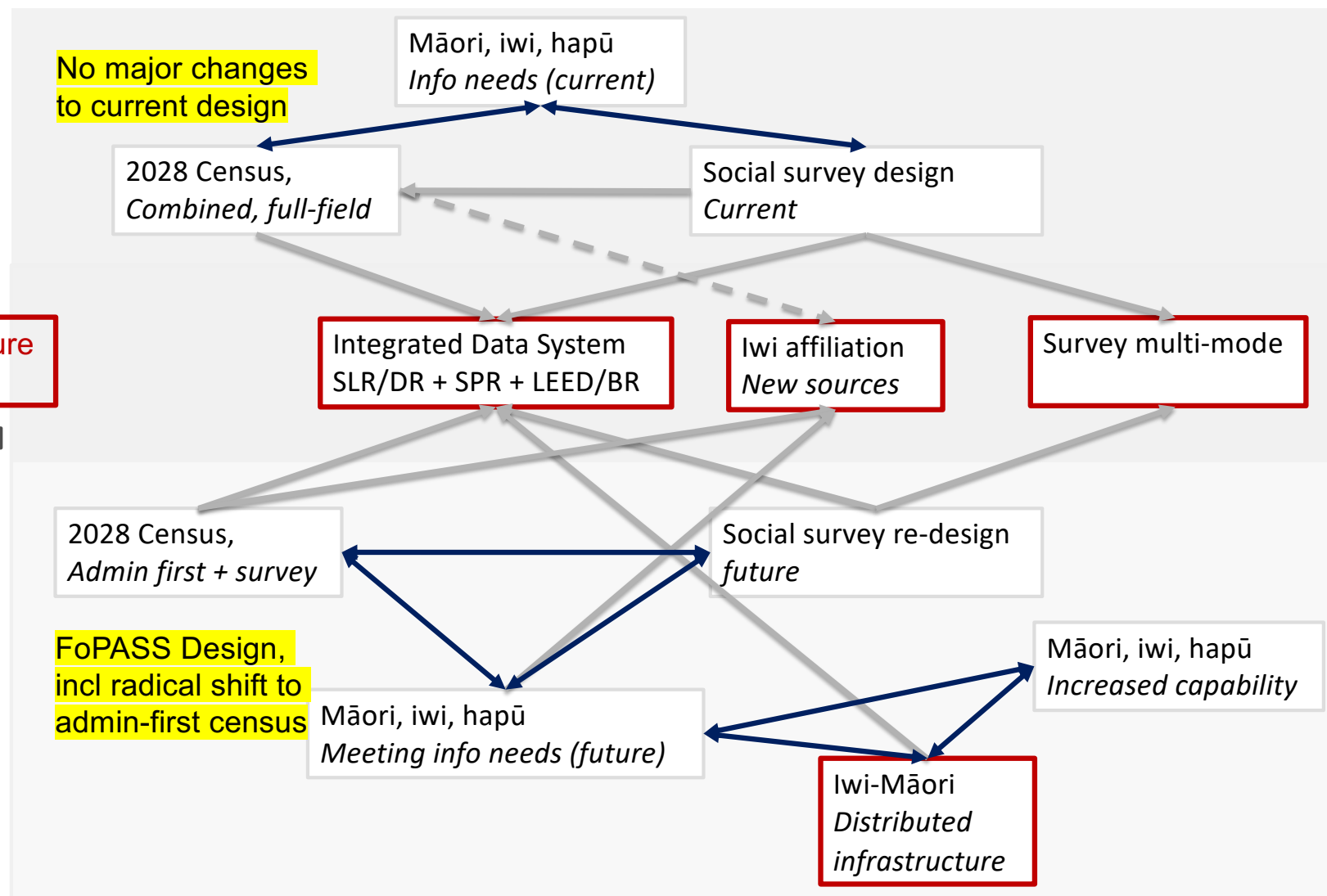




Critical infrastructure requirements

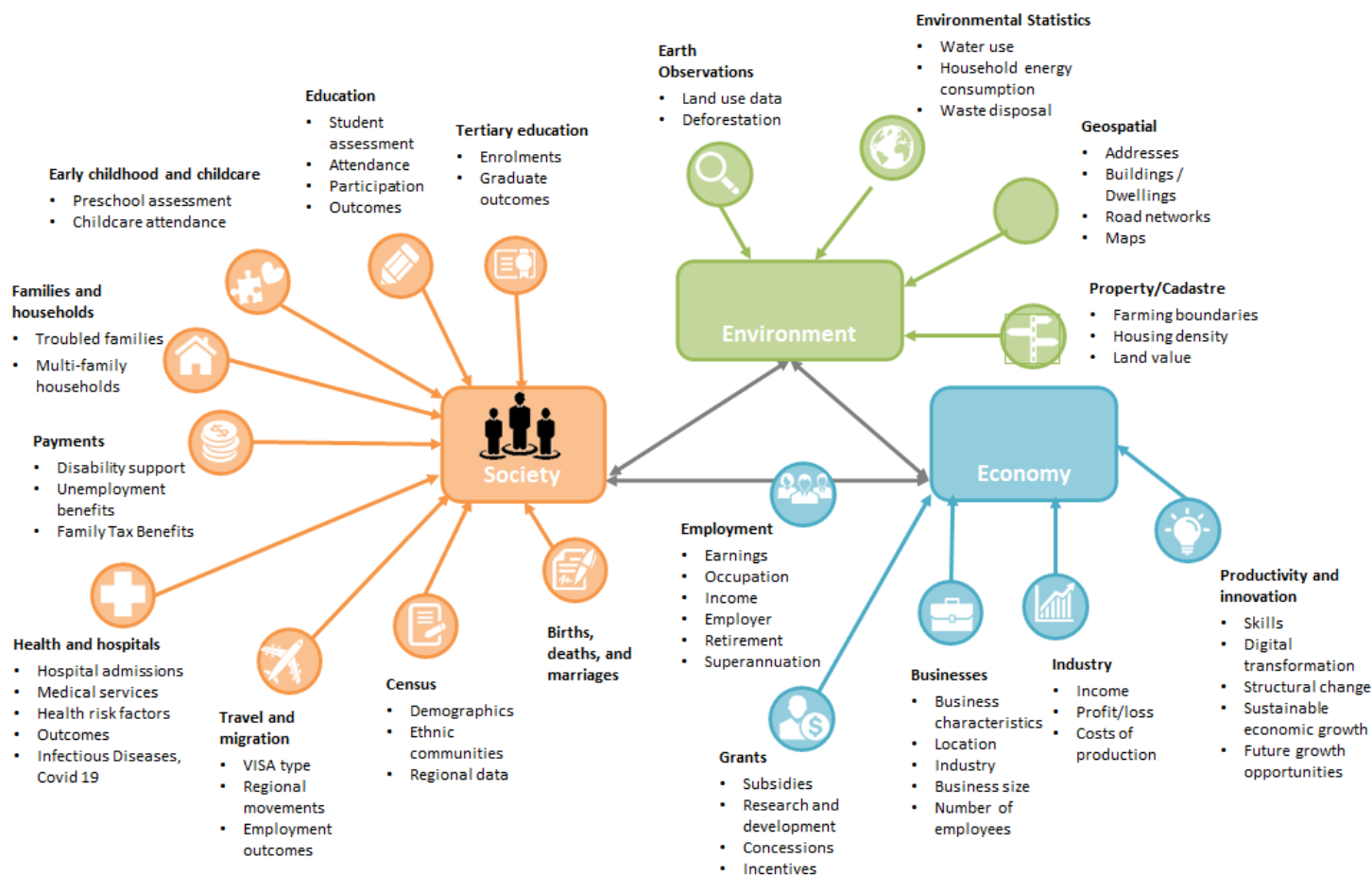


Note next layer infrastructure: needs analytical environment for computer intensive models to support admin data first

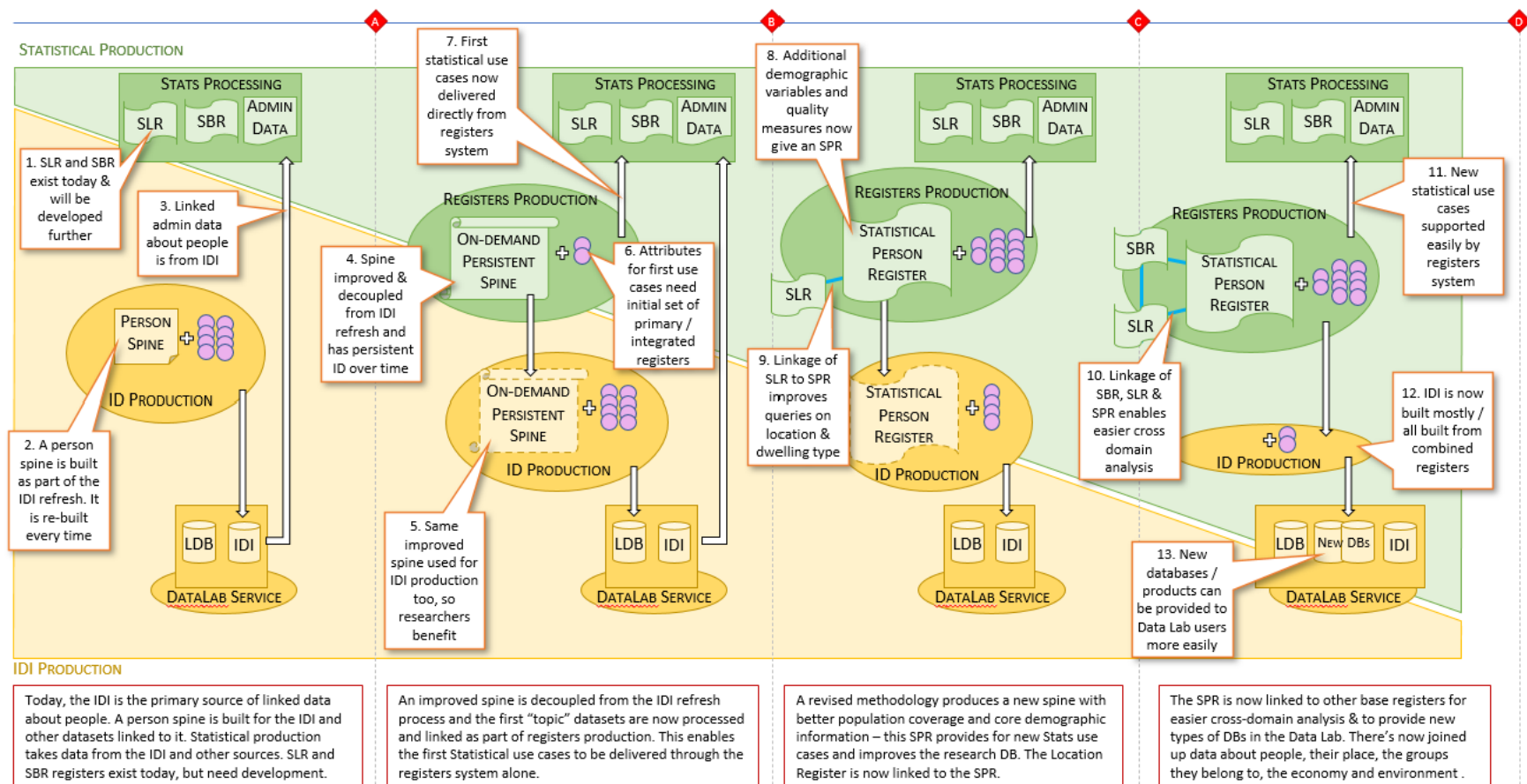




## Current and future admin data assets

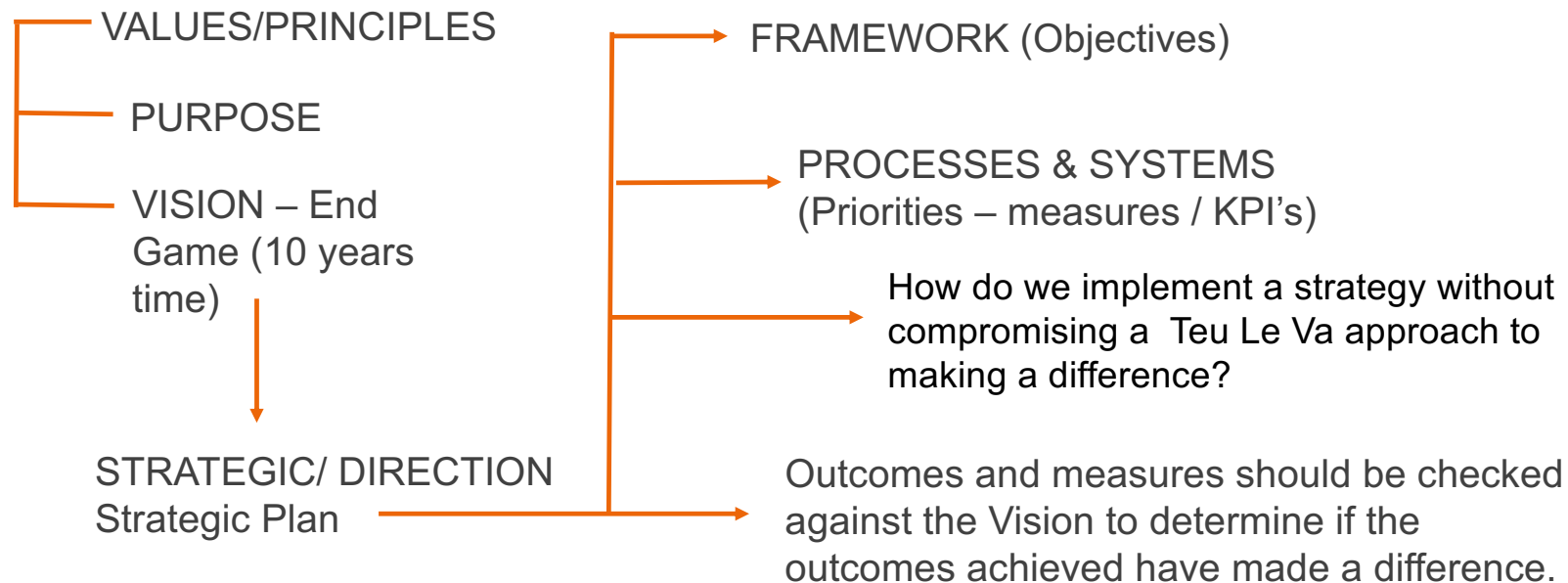


# A joint roadmap for RSS delivery – Deliver. Flourish. Adapt



# Vision and Strategy

## Outcomes vs IMPACT



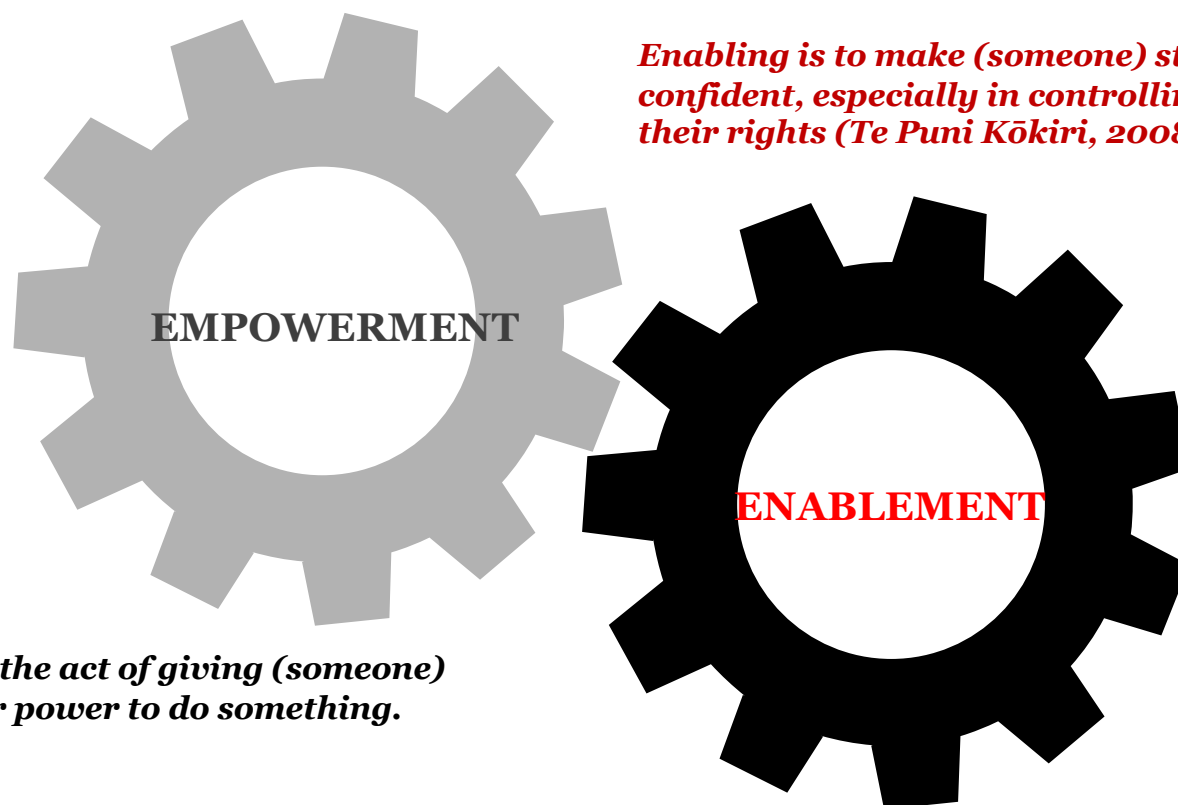
## Our institutional challenge

*We cannot continue to bring in leaders and colleagues of color into our profession and hope to narrow the glaring racial and ethnic gaps in our ranks, while trying simultaneously to keep all of our structures, systems, and approaches exactly the same as they have always been.*

**Dr Adrienne Lim**



***Empowerment and enablement includes whakamana – the capability and opportunity to make decisions, to act in self-determining ways, and to actively influence life decisions; and tino rangatiratanga – the management of resources and other taonga according to Māori culture.***



***Enabling is to make (someone) stronger and more confident, especially in controlling their life and claiming their rights (Te Puni Kōkiri, 2008)***

***Empowerment is the act of giving (someone) the authority or power to do something.***

***He Arotahi Tatauranga –  
Supplementary Guidance***

# The Tāngata Whenua, Tāngata Moana Paradigm applied to the Future State Integrated Data System

Pacific Data Sovereignty Conference 2022

Shane Ta'ala - Principal Advisor-Design  
Te Tohu Rautaki Angitū Māori

